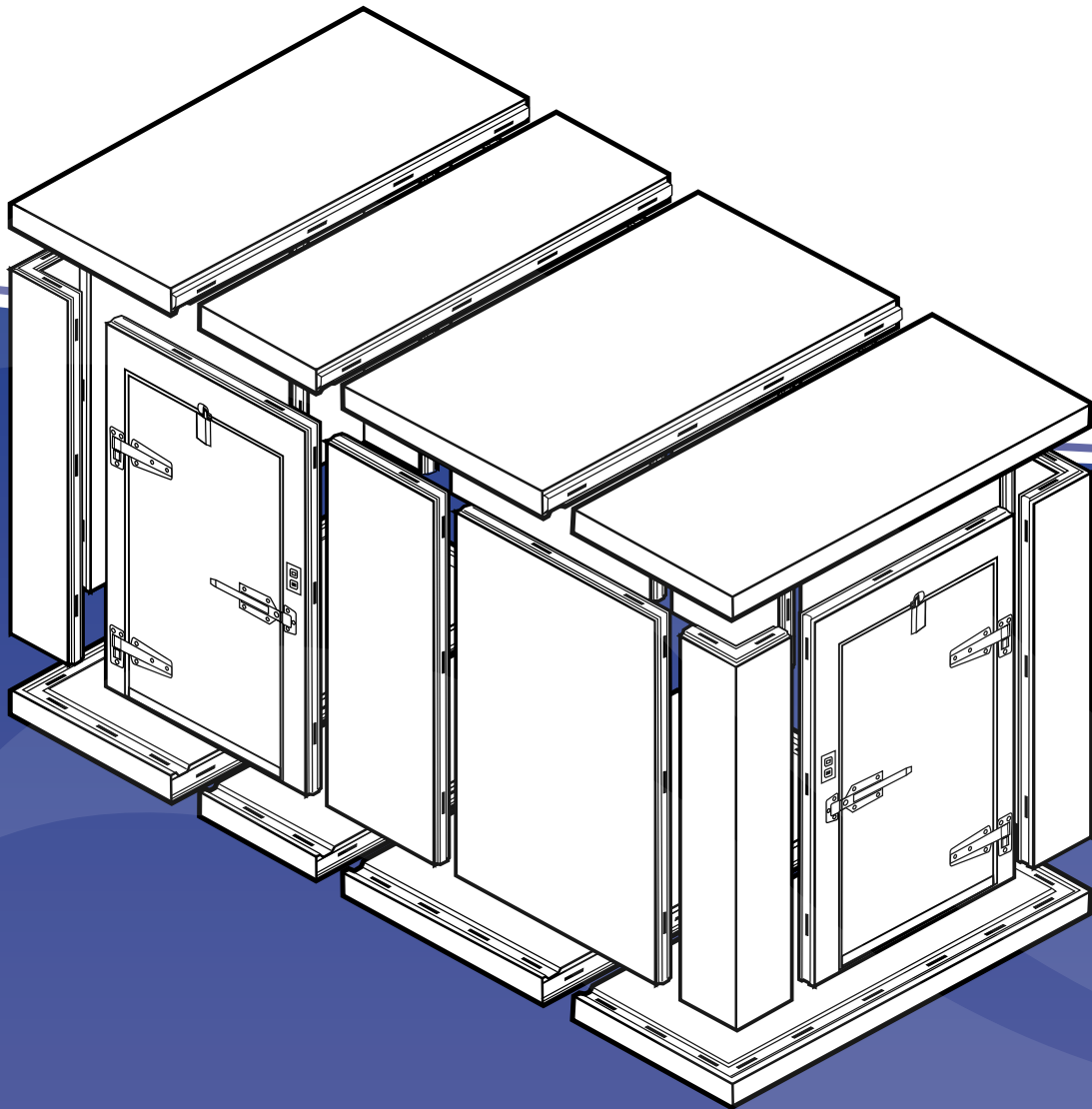


TAFCO

Walk-In to Quality



Energy Independence and Security Act of 2007 Compliant

INSTALLATION MANUAL

TABLE OF CONTENTS

1. INSTALLATION PREPARATION
2. SITE PREPARATION
3. EXAMPLE PAPER WORK
4. SCREED INSTALLATION (If installing walk-in without floor)
5. FLOOR INSTALLATION INSTRUCTIONS
6. WALL INSTALLATION INSTRUCTIONS
7. CEILING PANEL INSTALLATION
8. INSTALLING DOOR & FRAME
9. MOUNTING DOOR SILL
10. FINISHING
11. INSTALLING CEILING HANGER BRACKETS
12. INSTALLING MEMBRANE ROOF
13. BUCK OPENING AND GLASS DOOR INSTALLATION
14. INSTALLING A PACKAGED REFRIGERATION UNIT

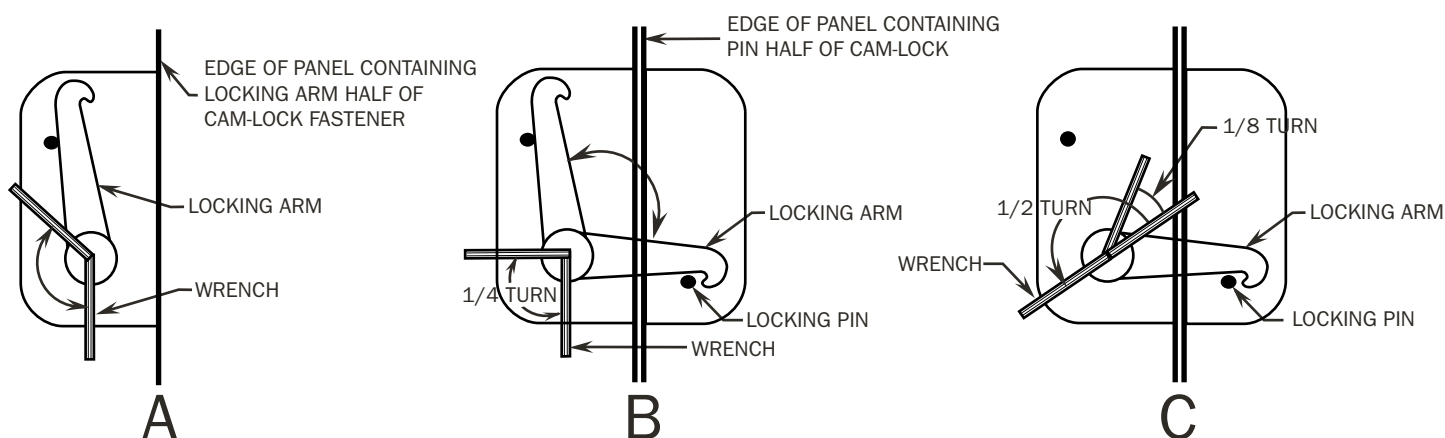
1. INSTALLATION PREPARATION

Tools and Materials Needed for Installation

- Carpenter's level for small structures
- Surveyor's level or transit for large applications
- Shims, if leveling becomes necessary
- Caulking for floor rims
- Silicone sealant for small penetrations
- Spray foam for large penetrations
- 5/16" allen wrench (supplied in the parts box)
- Philips and straight screwdrivers
- Adjustable wrench
- Hammers
- Pry-bar
- Utility knife

Operation of the Tafco Sure-Lock Fasteners

Before beginning installation, the correct operation of the panel fasteners must be understood. They are two part fasteners that include the latch (moving hook) in one panel and the strike (fixed pin) in the neighboring panel



A. Turn the wrench counterclockwise all the way to extend the arm fully.

B. Turn the wrench 1/4 turn clockwise to bring down the arm over the locking pin.

C. Turn the wrench an additional 1/2 turn clockwise to fully engage pin, completely locking panels together. Then turn back up 1/8 turn to loosely engage.

2. SITE PREPARATION

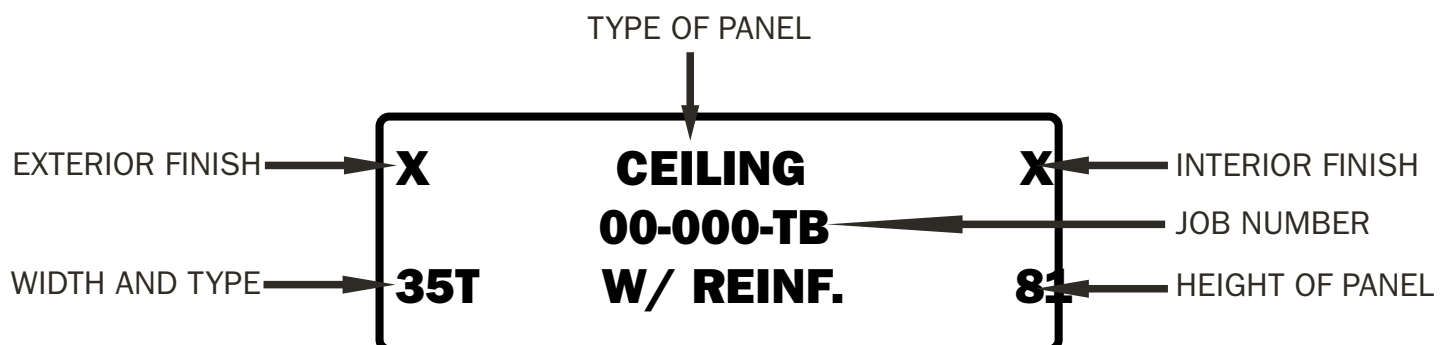
Mark the outline of the pre-fab structure on the building floor. Be sure it has sufficient clearance from building walls, ceilings, or any other obstructions. The most important condition for the erection is the levelness of the floor section. The building floor, in the area where the pre-fab structure is to be erected, should be checked with a level and the floor section of the structure should be shimmed if necessary.

1. Site Review


- A. Measure area of installation, comparing to drawings provided with walk-in
 - I. Minimum of 2" air gap is required between walk-in and any adjacent building walls. (Air gap is required to avoid sweating / condensation from forming on walls and possible formation of mold in the future.)
- B. Verify condition of slab is level
 - I. Recommend using a self-leveling laser to verify
 - 1. Floor must be level for a proper installation
 - a. Recommended methods for leveling sub floor
 - i. Self-leveling epoxy
 - ii. Concrete skim coat / grouting
 - iii. Compacted leveling sand if box is installed in a recessed pit
 - iv. Shimming of floor panels can be done, but is not the best method to support the floor
 - v. Shimming of floor panels required at a minimum (detail)
 - vi. Note: it is important that installation starts with a good base, as in all construction
 - II. Chalk lines for foot print of walk-in after sub floor is leveled
 - 1. Allow a minimum of 2" air space between walk-in and any adjacent walls
 - 2. Start by snapping a line on slab across front of walk-in
 - 3. Sides of walk-in can be laid out by using the following:
 - a. Laser projecting a perpendicular line to face of walk-in
 - b. Using the 3.4.5 method, or multiples of, for larger installations

Panel Identification

The tag on each panel indicates its use (wall, floor, ceiling, etc.) and their size. The first number indicates the width of the panel, and the second number indicates the length. In some cases, a letter may follow the width number: either "T" for tongue or "G" for groove. See example.



3. EXAMPLE PACKING LIST

TOTAL # OF PANELS (37)						TOTAL # OF FRAMES w / DOORS (2)											
WALLS						PANELS ABOVE											
QTY.	EXT.	WIDTH.	HGT.	INT.		QTY.	EXT.	WIDTH.	HGT.	INT.		QTY.	EXT.	WIDTH.	HGT.	INT.	
4	V26	12/12	117	V26	W00	2	V26	46	23	V26	W08 PANEL ABOVE w/ BOTTOM GROOVE RECS. TO MATCH 46" FRAME						
1	V26	13.5/12	117	V26	W01												
8	V26	46	117	V26	W02												
3	V26	34.5	117	V26	W03												
1	V26	34.5	117	V26	W04 w/ INT. WALL GROOVE & SPEC. BOTTOM LOCK												
1	V26	19.5	117	V26	W05 DOUBLE TONGUE w/ SPEC. TOP & BOTTOM LOCKS												
1	V26	11.5	117	V26	W06												
1	V26	23TG	117	V26	W07												
CEILINGS																	
1	V26	35T	150.5	V26	C00 w/ U-CHANNEL												
1	V26	35G	150.5	V26	C01 w/ SPEC. WALL GROOVE RECS. & U-CHANNEL												
1	V26	46	150.5	V26	C02 w/ U-CHANNEL												
1	V26	46	150.5	V26	C03 w/ SPEC. WALL GROOVE RECS. & U-CHANNEL												
1	V26	11.5	150.5	V26	C04 w/ U-CHANNEL												
FLOOR FRONTS						FLOOR REARS											
1	V26	35T	81	S18	F00 w/ SPEC. WALL GROOVE RECS. & SPEC. SIDE LOCKS	1	V26	35T	69.5	S18	F05						
1	V26	35G	81	S18	F01	1	V26	35G	69.5	S18	F06						
1	V26	46	81	S18	F02 w/ SPEC. WALL GROOVE RECS. & SPEC. SIDE RECS.	2	V26	46	69.5	S18	F07						
1	V26	46	81	S18	F03	1	V26	11.5	69.5	S18	F08						
1	V26	11.5	81	S18	F04												
<div> <div> METAL FINISH CODE (E) STUCCO ALUMINUM (A) SMOOTH ALUMINUM (X) STUCCO GALV. STEEL </div> <div> (WE) WHITE STUCCO ALUMINUM (WA) WHITE SMOOTH ALUMINUM (V) STUCCO GALVALUME </div> <div> (G) GALVANIZED (G14) 14GA GALVANIZED (S) STAINLESS (S16) 16GA STAINLESS </div> </div>																	
PARTS LIST						FRP FRAMES AND DOORS											
ASSEMBLY INSTRUCTIONS ONE (1) SET						DOOR #D01						DOOR #D02					
Wrench TWO(2)						FRAME (V26) 46" x 94" (V26)						FRAME (V26) 46" x 94" (V26)					
VXS100 Light Cover TWO(2)						DOOR (V26) 36.5" x 77.875" (V26)						DOOR (V26) 36.5" x 77.875" (V26)					
Plastic buttons, gray (300)						FLOOR TYPE 3-I w/ MTD. SILL PLATE						FLOOR TYPE 1 w/ ATTACHED SILL PLATE					
SCREED INSTRUCTIONS NOT REQ'D						FLUSH YES						FLUSH YES					
REFRIGERATION BY OTHERS						OVERLAP NO						OVERLAP NO					
Silicone Sealant (Gray) ONE(1)						GASKET MAG						GASKET MAG					
						HINGED LEFT						HINGED LEFT					
						HINGES (3) W-59-L						HINGES (3) W-59-L					
						LATCH W-29NC						LATCH W-29NC w/ Locking Hasp					
						FINISH Polished						FINISH Polished					
						THERM ---						THERM ---					
						LIGHT VXS100						LIGHT VXS100					
						SWITCH 24-DT						SWITCH 24-DT					
						HEAT D ---						HEAT D ---					
						HEAT F 226"						HEAT F BLANK J-BOX					
						JUNCT BOX HEATER J-BOX						JUNCT BOX STD					
						D. CLOSER W-94						D. CLOSER W-94					
						BOTH w/ VENT #K1825 IN HEADER											
						BOTH w/ SPEC. SIDE LOCKS AND RECS											
						DATE: 4/6/2016											
						DRN BY: xxxxx						JOB # 116-XXXX-TB					
												PO BOX 269 - 1101 GRAHAM STREET - HYDE, PA 16843					
												TEL: 814-765-9615 - FAX: 814-765-5410 TOLL FREE: 800-233-1954 WWW.WALKINS.COM					

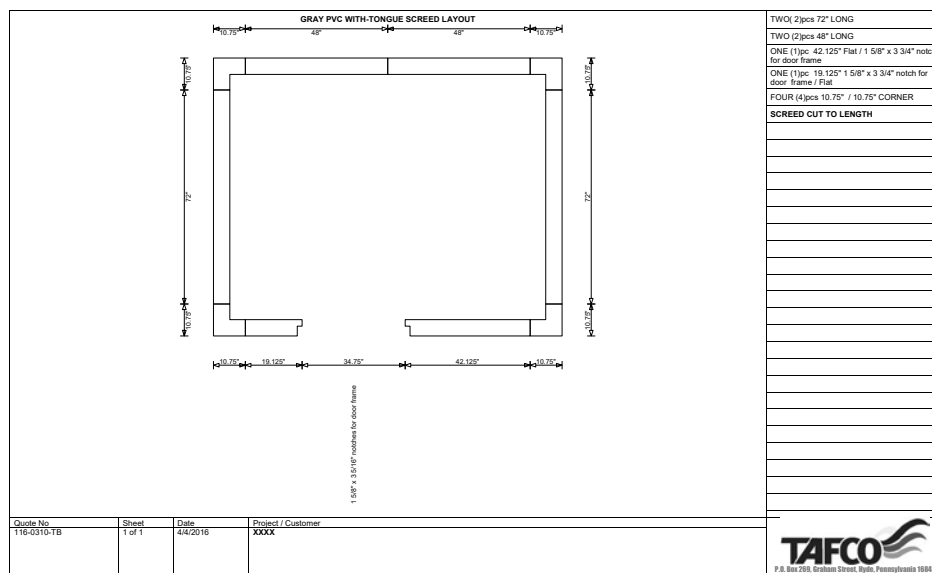
EXAMPLE CRATE LIST

- *Note: Parts box and drawings are located inside corner crate, and additional set of drawings and bill of materials are located in envelope taped to door and frame.

TAFCO ORDER # 116-XXXX-TB-	DATE: 4-6-16	TOTAL CRATES: 4 / CTNS:
CUSTOMER ORDER #		SHEET 1 of 3
SHIP TO:		
FOR ACCOUNT OF:		
SHIPPED VIA:		

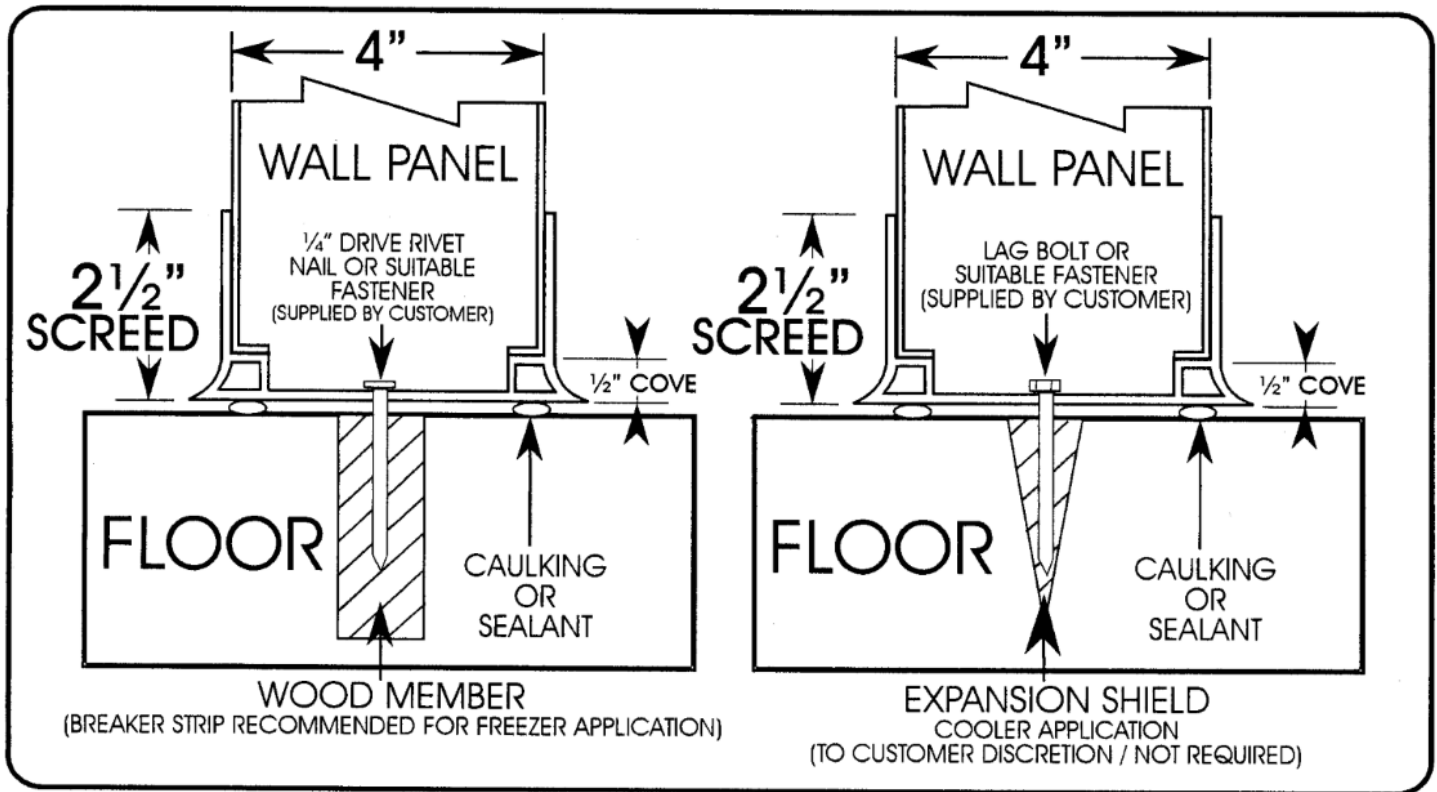
CRATE # 1	SKID # 1	CRATE # 4	SKID # 2
123"L X 48"W X "H	LBS	156.5"L X 48"W X "H	LBS
3 W02 V26 46x117 V26 WALL PANEL		1 C00 V26 35Tx150.5" V26 CEILING U-CHANNEL	
4 W00 V26 12/12x117 V26 CORNER PANEL		1 C01 V26 35Gx150.5" V26 CEILING U-CHANNEL, SP. WALL GRV. REC.S	
1 W07 V26 23TGx117 V26 TEE PANEL		1 C02 V26 46x150.5" V26 CEILING U-CHANNEL	
1 W01 V26 13.5/12x117 V26 CORNER PANEL		1 C03 V26 46x150.5" V26 CEILING U-CHANNEL, SP. WALL GRV. REC.S	
PARTS BOX		1 C04 V26 11.5x150.5" V26 CEILING U-CHANNEL	
CRATE # 2	SKID # 2	1 F00 V26 35Tx81" S18 FLOOR (FRONT) SP. WALL GRV. REC.S, SP. SIDE LOCKS	
123"L X 48"W X "H	LBS	1 F01 V26 35Gx81" S18 FLOOR PANEL (FRONT)	
3 W02 V26 46x117 V26 WALL PANEL		1 F02 V26 46x81" S18 FLOOR (FRONT) SP. WALL GRV. REC.S & SP. SIDE REC.S	
3 W03 V26 34.5x117 V26 WALL PANEL		1 F03 V26 46x81" S18 FLOOR PANEL (FRONT)	
1 W04 V26 34.5x117 V26 WALL INT. WALL GRV.		1 F04 V26 11.5x81" S18 FLOOR PANEL (FRONT)	
1 W06 V26 11.5x117 V26 WALL PANEL		1 F05 V26 35Tx69.5" S18 FLOOR PANEL (REAR)	
2 W08 V26 46x23 V26 WALL PANEL ABOVE W/ BOT. GRV.		1 F06 V26 35Gx69.5" S18 FLOOR PANEL (REAR)	
1 W05 V26 19.5x117 V26 WALL DBL TON.		2 F07 V26 46x69.5" S18 FLOOR PANEL (REAR)	
CRATE # 3	SKID # 2	1 F08 V26 11.5x69.5" S18 FLOOR PANEL (REAR)	
123"L X 48"W X "H	LBS		
2 W02 V26 46x117 V26 WALL PANEL			
1 J01 V26 46x94 V26 LHH DOOR AND FRAME D01			
1 J02 V26 46x94 V26 LHH DOOR AND FRAME D02			

EXAMPLE SCREED LAYOUT & INSTRUCTIONS



4. SCREED INSTALLATION (Walk-in without Floor)

- Review screed layout drawing



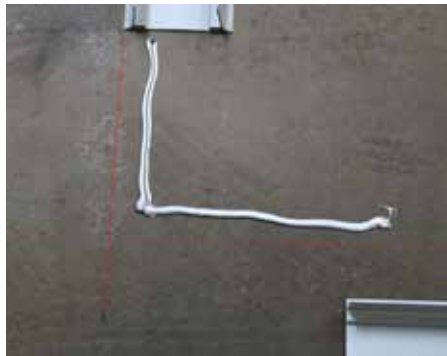
- Snap lines for interior of screed 1 1/2 inches less than interior dimension or snap lines for exterior of screed 1 1/2 inches bigger than outside of walk-in to allow for 3/4" cove on screed.



- Be sure layout is square (refer to box layout instruction)



- Layout pieces of screed starting in one corner. Silicone and or butyl caulk bottom of screed. Set screed in place on snapped line. Anchor down by drilling interior of channel and installing 1/4" drive pin anchors.



- Slide walls into channel of screed. Lock walls lining up top corners of each wall.



5. FLOOR INSTALLATION INSTRUCTIONS

- Check floor for level; if floor is un-level, can level with sand or self-leveling epoxy.
- All panels are locked together with cam latches; to lock cams, insert cam wrench and turn clockwise.
- Be sure to allow at least 2" of space between building walls and cooler walls.
- Check cooler drawing for panel layout.
- Begin by locking floor panels together; starting at one end, flush panels side to side and top to top (see figures 1A).



- Check with level (see figures 1B).



6. WALL INSTALLATION INSTRUCTIONS

- Check drawing for panel layout.
- Start with back corner (see figures 2A).



- Back wall panel next to corner panel, lock panels together starting with top lock, then middle lock and bottom lock, making sure panels are flush (see figures 2B, 2C, 2D, & 2E??).



- Then lock side wall panel next to corner panel.
- Continue installing rear wall panels according to drawing.
- Install 2nd rear corner panel (see figures 2F).



- Continue installing side panels according to drawing (see figures 2G & 2H).



- Install left front corner panel making sure panels are flush on top and panel to panel (see figure 2I)



- Install front wall panels according to drawings (see figures 2J).



- Install right front corner panel making sure panels are flush on top and panel to panel (see figures 2K).



7. CEILING PANEL INSTALLATION

- Layout all panels according to drawing.
- Lock front corners of walls to ceiling panels making sure they are flush.

- Starting with front ceiling panel, lock ceiling panel to ceiling panel making sure they are not stepped (see figures 3A).



- Continue locking all ceiling panels to ceiling panels.
- Starting from front, lock all ceiling panels to wall panels making sure they are flush with walls (see figure 3B).



8. INSTALLING DOOR & FRAME

- After door section is installed, check for plumb. Using a level on the face of the door section, adjust position before locking to adjacent section.



- The electrical junction connected to the lamp fixture on the inside of the door frame must be connected to the appropriate voltage. We recommend a separately fused 15 amp circuit. (It is also recommended that power is not connected until operating temperature has been reached, as it may damage heater wire.)
- To connect electric, drill a hole in the ceiling panel above the junction box.
- Extend conduit through the hole into the junction box connected to the lamp fixture.
- Once wires have been pulled, seal ends of conduit with caulking to prevent moisture from infiltrating the lamp fixture.
- Connect the electric supply to the conductors inside the junction box that feed the lamp and door and frame heaters. (There may also be a red wire marked "LIGHT" in the junction box, this wire is to be used for additional lighting, or can remain capped off if no additional lighting is required).

9. MOUNTING DOOR SILL

- Remove shipping bracket (see figure 5A).



- Insert sill plate (see figure 5B).



- Attach sill plate to inside top of floor panel with 3 self-tapping screws (see figures 5C).



- Attach front of sill plate to floor panel with 3 self-tapping screws (see figures 5D).



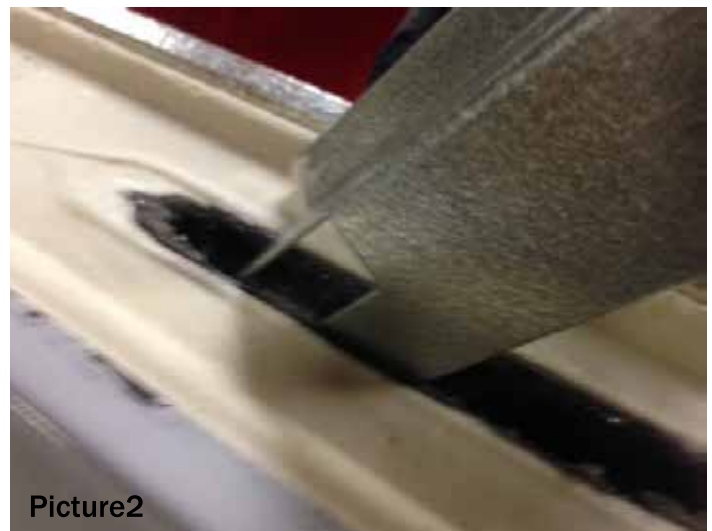
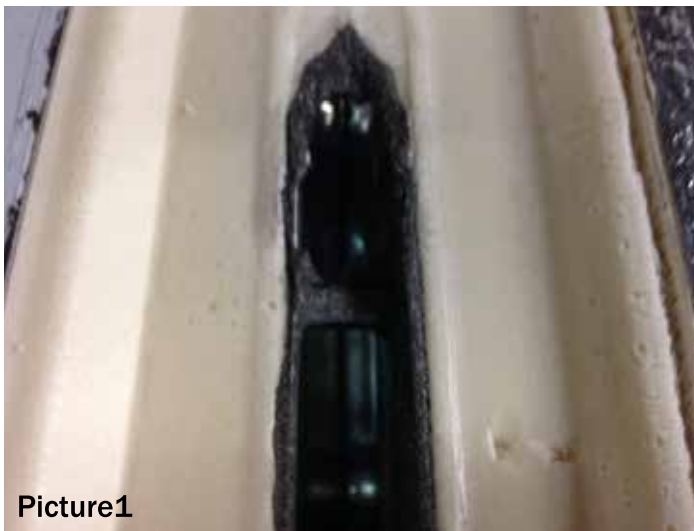
10. INSTALL BUTTONS OVER CAM LOCK HOLES

- Insert button in cam lock hole and hit button with a hammer (see figures 6A, 6B, & 6C).



11. INSTALLING CEILING HANGER BRACKETS

- It is important that the ceiling is installed level and square with the walk-in.
- A minimum of 1 hanger bracket every 2 feet is required.
- On multiple sectional ceilings, extra care needs to be taken by adjusting locking patterns to be sure ceilings are installed square and true. (It is important that ceiling corners line up and no stepping occurs).
- Place the bracket in the groove side as shown in picture 1 and 2



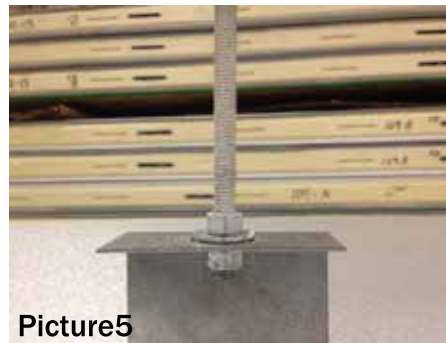
- Bracket will slide into place



- Pry the bracket over with a screwdriver.



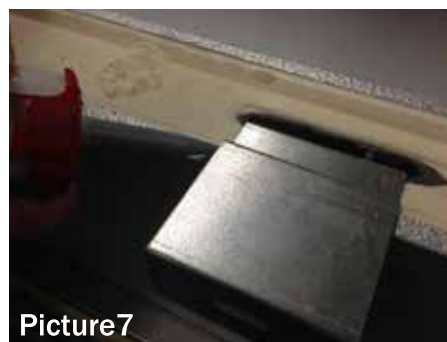
- Make sure there is a nut and washer both top and bottom of ceiling hanger bracket.



- Rods must be installed plumb to prevent ceiling from being pushed or pulled out of square.



- It is recommended that the installer apply silicone sealant to the short side of the groove just prior to locking the next panel in.



12. MEMBRANE ROOF INSTALLATION (Free Standing Walk-In)

- Check the roof top of the walk-in and remove any foreign matter. Seal all protruding rough edges such as screw heads, rivets, etc. with caulking. This will prevent any chance of penetrating or wearing a hole in the membrane roof cap.
- Before installation, check the overall width and length of the membrane roof cap. It should be approximately one foot longer and wider than the walk-in.

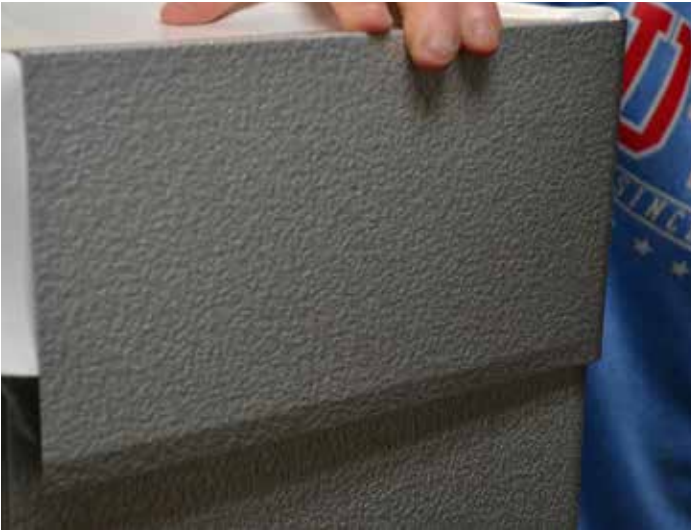


- Snap a chalk line approximately 51" from edge of walk-in. Line up tab on membrane roof with chalk line. Using screws and Duro-last fasteners provided start securing 6" from edge continue fastening every 12" on center until 3" tab is secured along entire tab.



- Unroll roof cap membrane to nest tab and fasten. When fastening remaining tabs, check often to make sure all slack in roof cap is pulled taut.

- On completion of roof cap tabs fold corners (image #) and install flashing trim (image #) around perimeter of walk-in. Use screws spaced 6" on center seal top edge of trim with caulking.



12. MEMBRANE ROOF INSTALLATION (Flashed Against Building Wall)

NOTE: The following installation instruction should be followed when the membrane roof cap is installed on walk-in adjacent to an existing building wall.

- Check roof top of walk-in and remove any foreign matter. Seal all protruding rough edges such as screw heads, rivets, etc. with caulk. This will prevent any chance of penetrating or wearing a hole in the membrane roof cap.
- Before installation, check the overall width and length of the membrane roof cap. It should be approximately one foot wider and longer than the walk-in.
- Mark a line approximately 57" from building wall (image). Fasten first 3" tab using a 1 ½" screw and a Duro-last plate. Start securement 6" from edge (image). Continue fastening, 12" on center, until 3" tab is secured along the entire tab (image).



- Fasten reverse tab to building wall using Duro-last plates. Plates will be secured to wall using appropriate screws. Fastened on 6" centers (image).



- Install 6" X 6" wall flashing, using appropriate screws, and seal with caulking (image).



- Unroll roof cap membrane to next tab and fasten. When fastening remaining tabs, check often to make sure all slack in roof cap is pulled taught.
- On completion of roof cap tabs, fold corners as shown (image) and install flashing trim around perimeter of walk-in (images). Use 1/2" screws spaced 6" on. Seal top edge of trim with caulking.



13. BUCK OPENING AND GLASS DOOR INSTALLATION

When installing a buck opening be sure to keep the opening square and walls level.

- Install corner brackets to keep the opening square.



- Install door frame and clamp into place.



- Once the frame is clamped firmly in place and is level, using the screws provided, screw the glass door frame to the buck opening.



14. INSTALLING A PACKAGED REFRIGERATION UNIT

Packaged refrigeration units are designed to be dropped in through a cut out in the walk-in ceiling. Refrigeration units will be shipped with a wooden curb which is to be installed before the membrane roof and will allow for proper water drainage away from the opening.

- Place wooden curb around opening, before installing membrane roof.



- Install membrane roof according to instructions, pulling roofing material over wooden curb.



- Cut an opening in the membrane roof above the opening in the walk-in ceiling. Remove only a small amount of material and allow excess to be folded inside opening.



- A bead of silicon should be put on the membrane roof prior to dropping unit through the opening. After the refrigeration unit is through the opening, a second bead of caulking is recommended around entire base of the unit.



- Install trim pieces on interior of the walk-in.
- Zanotti packaged units are equipped with a micro door switch that can be wired to a magnetic door switch, which allows for operation of the light (if wired to zanotti wiring harness) and will also pause fan operation while door is open. Most walk-ins will come with a 24 DT digital thermometer and switch mounted in the door frame. Refrigeration units are also packaged with a key pad that can be mounted at the door frame and acts as a digital thermometer and light switch, and also allows for programming of the refrigeration system. (Some customers may prefer not to mount refrigeration controls where unauthorized persons could have access).



Walk-In to Quality

**1395 Industrial Park Road,
Clearfield, PA 16830**

**PO Box 269
Hyde, PA 16843**

**Toll Free: (800) 233-1954
Tel: (814) 765-9615
Fax: (814) 765-5410
tafcowalkins.com**

**Due to continuing development, specifications are subject to change
without notice. For more information please contact us.**

© TMP Manufacturing Company, Inc. Revised September 2016. All Rights Reserved.